



Upper Columbia River Soil Studies

Region 10

June 2014

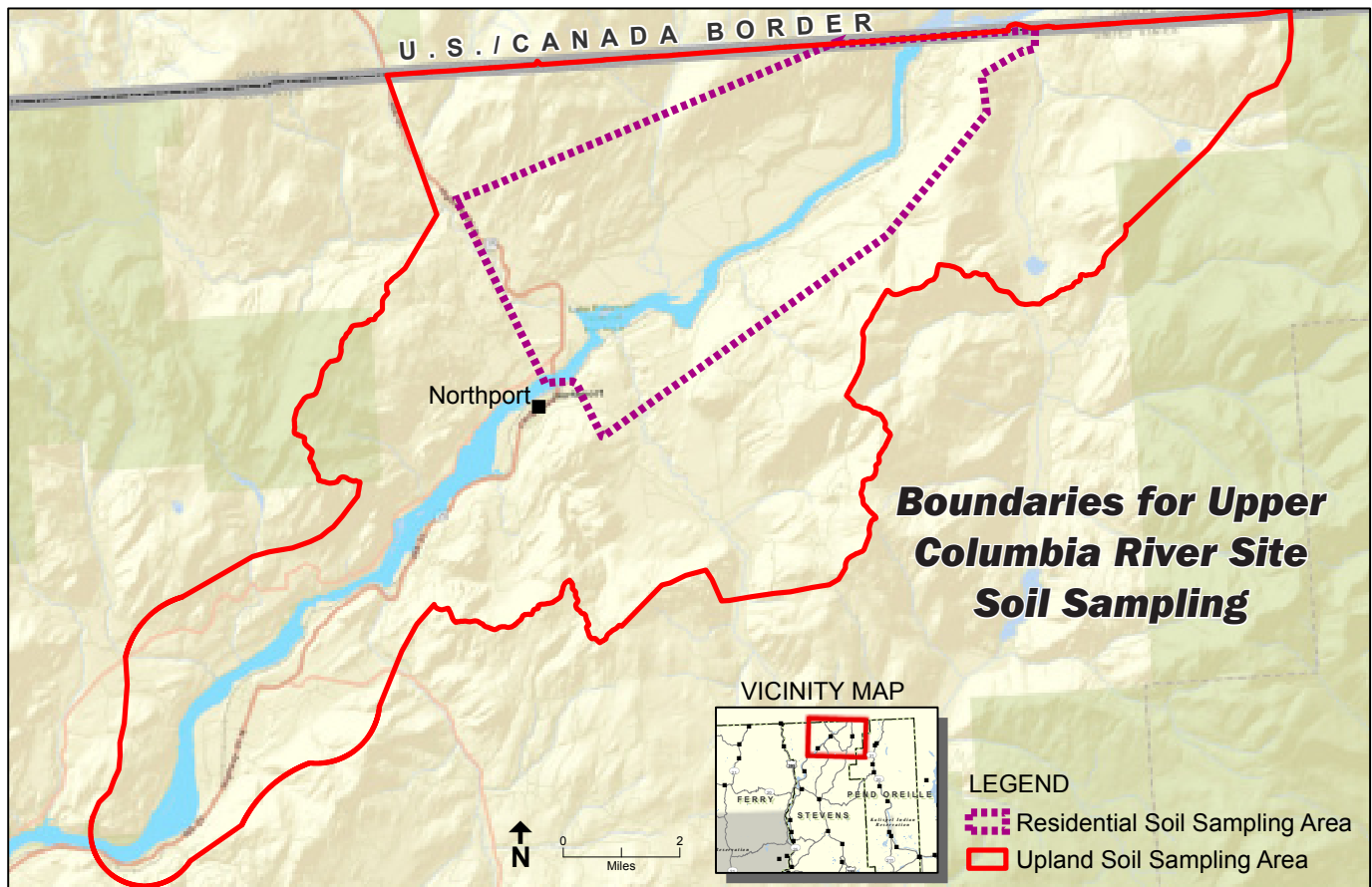
The United States Environmental Protection Agency is studying metals contamination in the Columbia River area from the U.S./Canada border to the Grand Coulee Dam and surrounding upland areas. The study is called a Remedial Investigation and Feasibility Study (<http://www.epa.gov/superfund/cleanup/rifs.htm>). As part of that study, we are looking at metals contaminants in soil. There are two soil studies:

1. The EPA is conducting a residential soil study (see dashed-line study area in map inside).
2. Teck American Incorporated is conducting an upland soil study with oversight by EPA (see solid-line study area in map inside).

The table on the next page highlights the similarities and the difference between the studies.



	EPA Residential Soil Study	Teck Upland Soil Study
Purpose	Determine if there are levels of lead and arsenic in the soil from smelter emissions around residential properties that may cause a concern to people.	Determine if there are increased levels of metals in soil from smelter emissions that may cause concern for people, plants or wildlife.
Who's leading the effort	U.S. EPA	Teck, with oversight by U.S. EPA
What is being studied?	Exposure of people to metals contaminated soil.	Exposure of people and plants and animals to metals contaminated soil.
What is the study design?	Voluntary sampling is available to all residential properties within the dashed line study area (see map ↗).	Sample randomly selected areas within the solid line study area to determine if there are increased levels of metals in the soil, and if so, where they are coming from (see map ↗)..
Who sent the letters requesting access?	U.S. EPA	Teck
Who received letters?	All property owners within the dashed line area.	All property owners within the solid line area.
Who Is eligible for sampling?	All properties in the boundary with a dashed line that use the property as a residence (full-time or part-time).	The properties where samples have been randomly selected within the solid line area.
When did the letters go out?	Letters were sent in January, 2014. If you did not receive one and think your property is within the dashed line boundary please contact the EPA individual listed below. ↘	Informational letters were sent out May 2014. If your property was randomly selected, then you also received a request for access. For additional information please contact the Teck individual listed below. ↘
Who can I contact for more information?	Kay Morrison from EPA at 1-800-434-4372 extension 8321 or Morrison.Kay@epa.gov	Kris McCaig from Teck American Incorporated at 509-623-4501 or Kris.McCaig@Teck.com
When will sampling be performed?	Late summer and fall 2014.	Late summer and fall 2014.
Who will be performing the sampling?	U.S. EPA and our contractor, CH2MHill.	Teck's contractor with EPA oversight.
Who is paying for the sampling?	Teck	Teck



For More Information

Official records and other documents about the Upper Columbia River study can be found at:

EPA Region 10 Superfund Records Center


1200 Sixth Avenue, Suite 900, ECL-076
Seattle, WA 98101

Please call for an appointment
206-553-4494
or toll-free at 1-800-424-4372

Contacts:

Kris McCaig, Teck American Inc.
Kris.McCaig@Teck.com
509-623-4501

Kay Morrison, U.S. EPA
Community Involvement Coordinator
Morrison.Kay@epa.gov
1-800-424-4372 extension 8321
or 206-553-8321

 TDD or TTY users, please call 1-800-877-8339 and give the operator Kay Morrison's phone number.



Learn More on the Web

Upper Columbia River Site Study

<http://go.usa.gov/9gPH>